

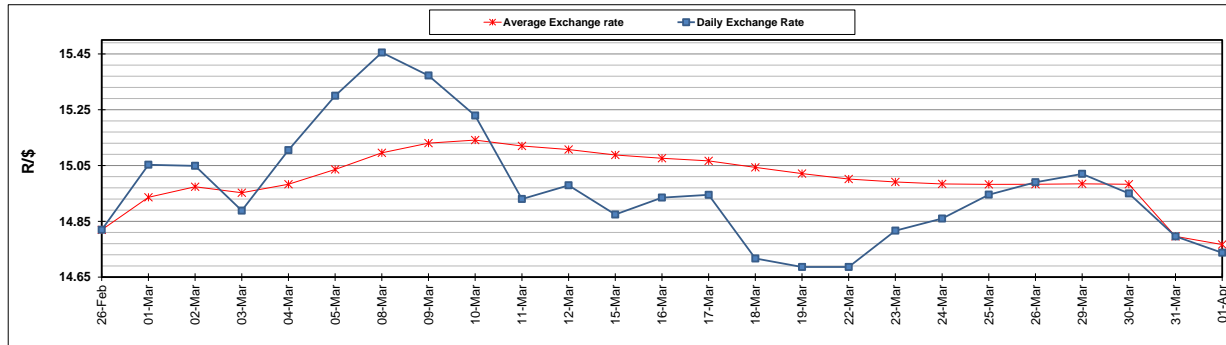
	PETROL 95 ULP	PETROL 93 ULP & LRP	DIESEL 0.05%	DIESEL 0.005%	ILL. PAR.
GAUTENG PUMP PRICE (SA c/l) AS FROM 07/04/2021	1,732.000	1,710.000	-	-	-
WHOLESALE PRICE (SA c/l) AS FROM 07/04/2021	-	-	1,477.620	1,480.020	880.488
SINGLE NATIONAL MAXIMUM RETAIL PRICE	-	-	-	-	1,106.000
BASIC FUEL PRICE - 01/04/2021 (SA c/l)	716.532	700.341	635.388	638.003	618.476
PRESS RELEASE CONTRIBUTION TO BFP 31/03/2021 - 01/04/2021 (SA c/l)	665.170	658.170	653.630	658.030	633.128
UNIT OVER/(UNDER) RECOVERY - 01/04/2021 (SA c/l)	(51.362)	(42.171)	18.242	20.027	14.652
AVERAGE BASIC FUEL PRICE 31/03/2021 - 01/04/2021	720.829	705.485	640.552	643.030	623.777
AVERAGE UNIT OVER/(UNDER) RECOVERY 31/03/2021 - 01/04/2021	(55.659)	(47.315)	13.078	15.000	9.351

### ANALYSIS MOVEMENT OF AVERAGE OVER/(UNDER) RECOVERY

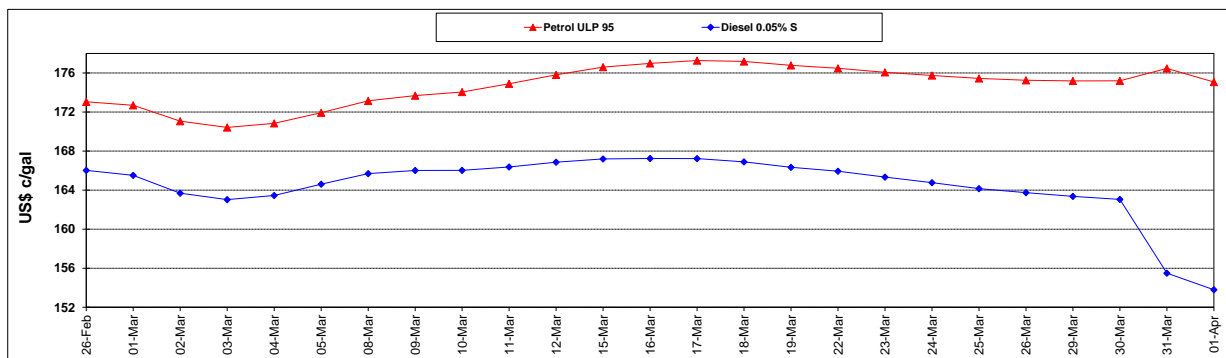
	PETROL 95	PETROL 93	DIESEL 0.05%	DIESEL 0.005%	ILL. PAR.
- MOVEMENT IN INTERNATIONAL PRODUCT PRICES	(66.213)	(57.644)	3.700	5.585	0.218
- MOVEMENT IN EXCHANGE RATE	10.554	10.329	9.378	9.415	9.133
AVERAGE UNIT OVER/(UNDER) RECOVERY 31/03/2021 - 01/04/2021	(55.659)	(47.315)	13.078	15.000	9.351

### R/\$ EXCHANGE RATE - (R/\$14.7373 - 01/04/2021)

#### EXCHANGE RATE USED IN BASIC FUEL PRICE



#### INTERNATIONAL PRODUCT PRICES OF BASKET USED IN BASIC FUEL PRICE



#### BASIC FUEL PRICE IN SA CENTS PER LITRE

